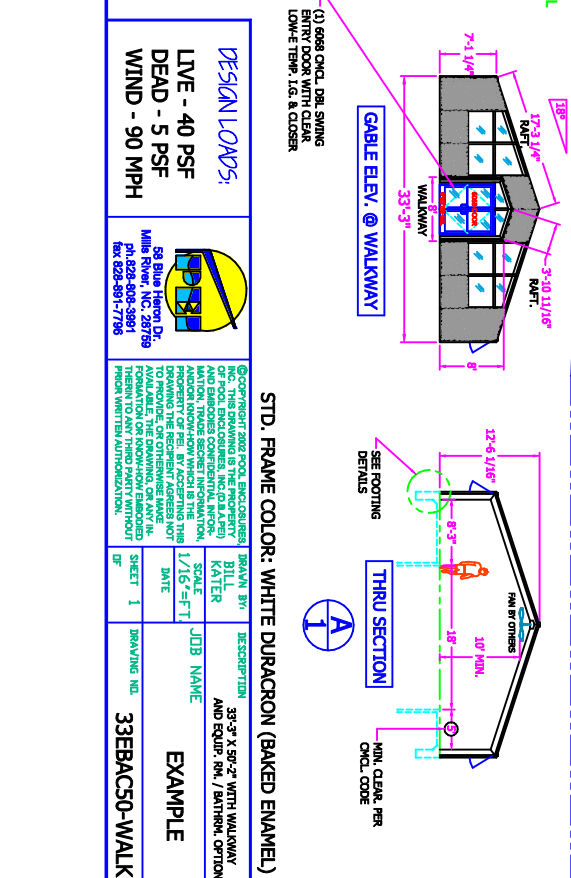
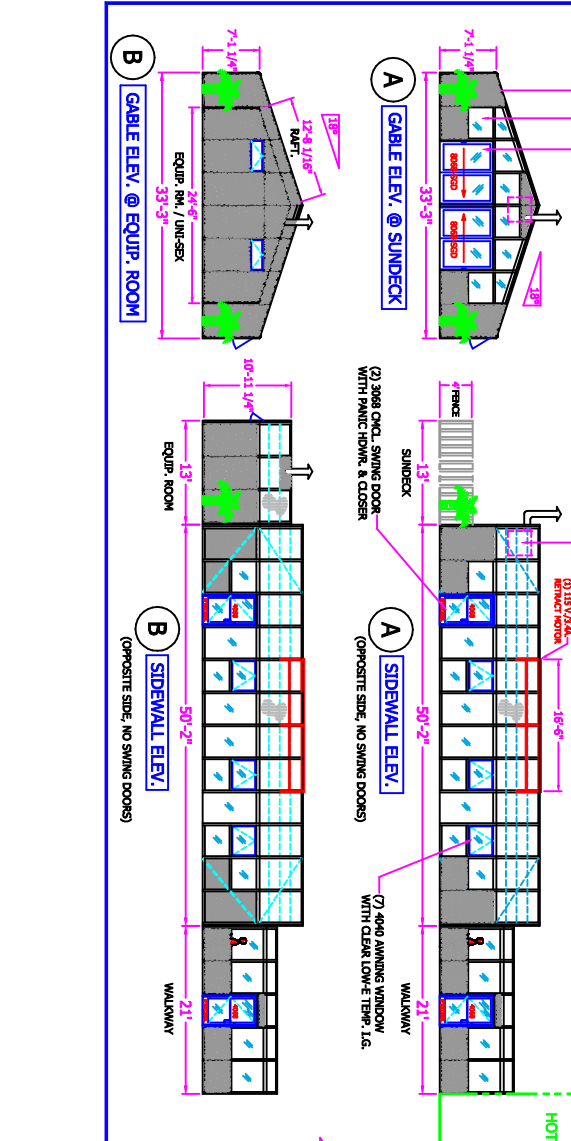
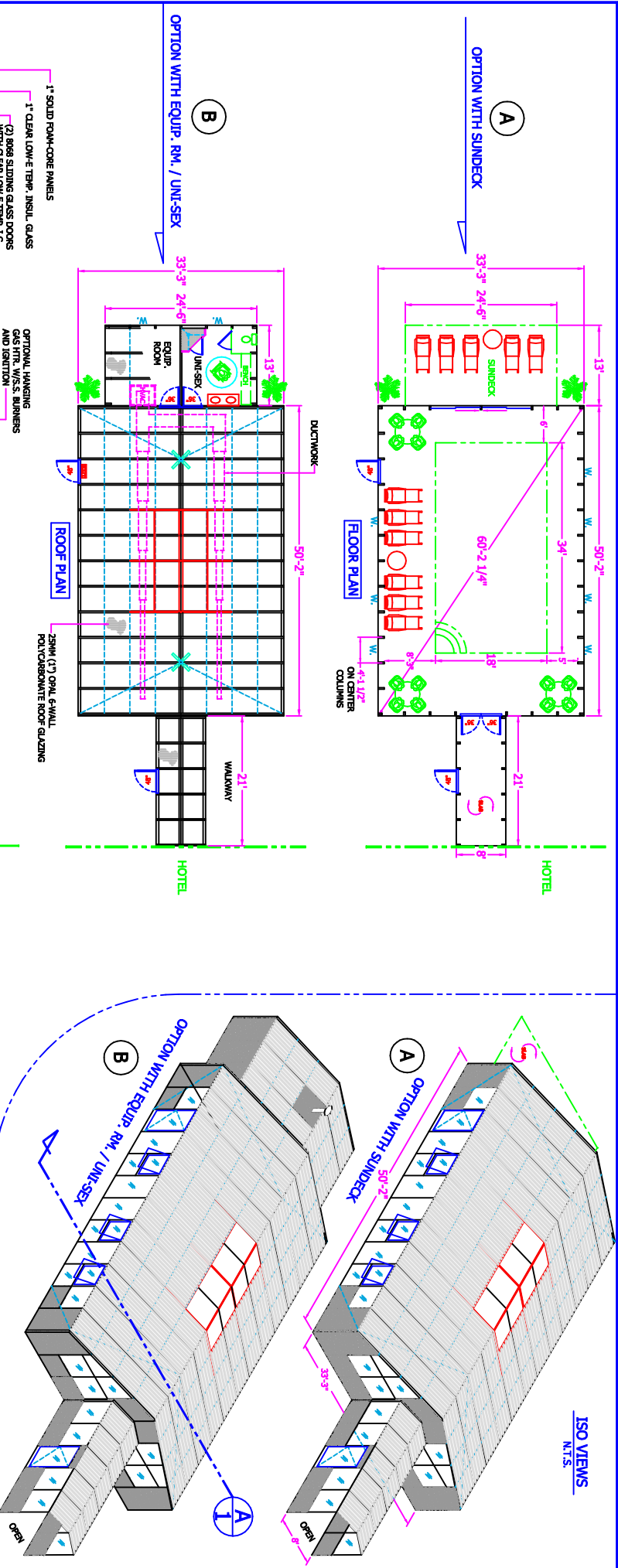


- A** FREESTANDING POOL ENCLOSURE WITH WALKWAY AND SUNDECK OFF REAR GABLE END
- B** FREESTANDING POOL ENCLOSURE WITH WALKWAY & EQUIPMENT ROOM / UNI-SEX BATHROOM

ISO VIEWS  
N.T.S.



<b>DESIGN LOADS:</b>			30 YEAR WIND SPEED MILLER HURRICANE PH: 828-405-3861 FAX: 828-891-1786
LIVE - 40 PSF	DEAD - 5 PSF		
WIND - 90 MPH		©COPYRIGHT 2002 FOR ENCLOSURES, INC. THIS DRAWING IS THE PROPERTY OF ENCLOSURES, INC. (D.A.B.) AND NO PART OF THIS DRAWING, OR THE INFORMATION CONTAINED HEREIN, MAY BE REPRODUCED, COPIED, OR TRANSMITTED IN ANY FORM OR BY ANY MEANS, WITHOUT THE WRITTEN AUTHORIZATION OF ENCLOSURES, INC.	
BRANN BY:	DESCRIPTION:	SCALE:	JOB NAME:
KATER	33'-3" X 50'-2" WITH WALKWAY AND EQUIP. RM. / BATHRM. OPTION	1/16" = 1'-0"	EXAMPLE
DATE:			
SHEET 1	BRANNING NO.	33EBAC50-WALK	