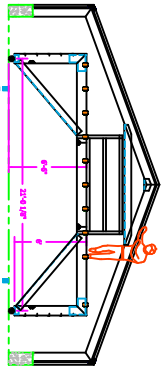


PROJECT NAME: NEW

SIGN IF APPROVED: \_\_\_\_\_

DATE APPROVED: \_\_\_\_\_

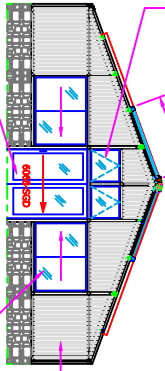


SCAFFOLDING REF.

25MM (1") 10X I.R. GOLD OPAL POLYCARBONATE ROOF & WALL GLAZING

(2) AWNING WINDOWS

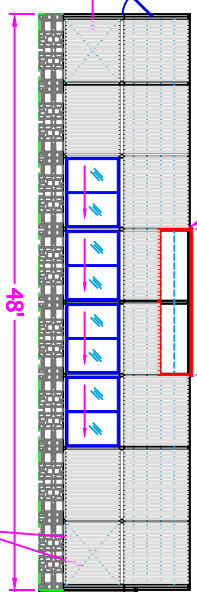
6'-4 11/16" RETRACT. ROOF PANEL



(1) 6068 SLIDING GLASS DOORS OPPOSITE GABLE END ELEV.

(2) SLIDING WINDOWS TYPICAL OPP. END

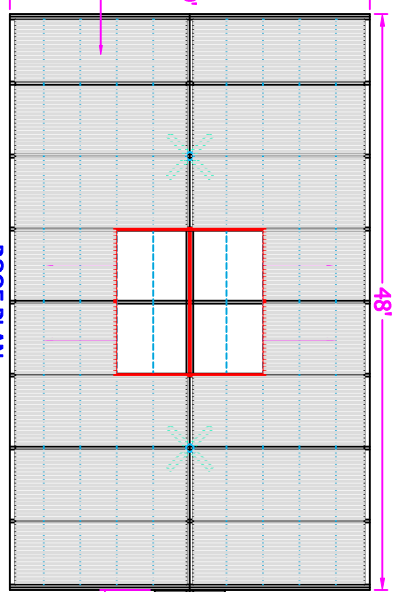
TYPICAL SIDEWALL ELEV.



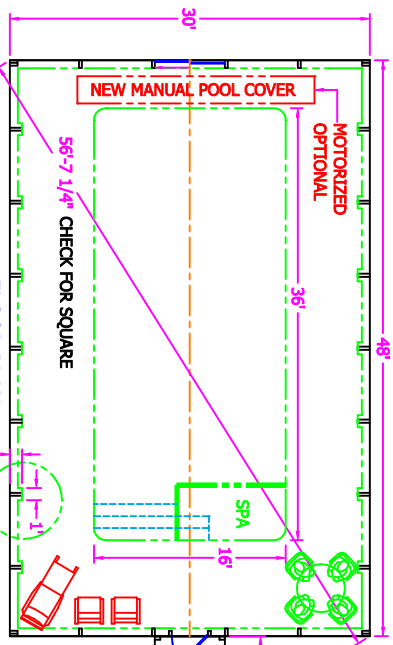
(1) 115 V/3/4" RETRACT. MOTOR

12'-2" OPNG.

ROOF PLAN



FIELD VERIFY VESTIBULE



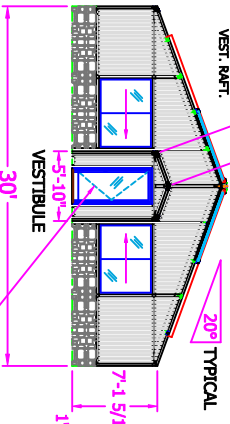
NEW MANUAL POOL COVER

MOTORIZED OPTIONAL

56'-7 1/4" CHECK FOR SQUARE

FLOOR PLAN 1440 SQ.FT.

NEW PIENS (14) PLS.



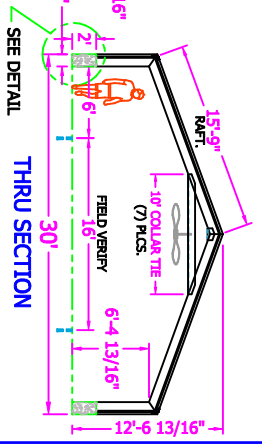
2'-10 3/4" VEST. RAFT.

20° TYPICAL

GABLE ELEV. @ HOUSE

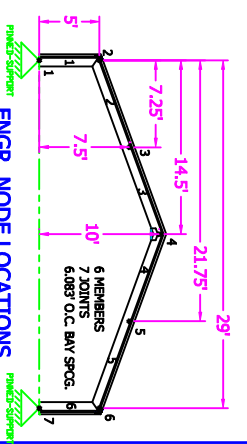
1" SOLID FOAM-CORE PANELS

(3) 3068 SWINGING DOORS



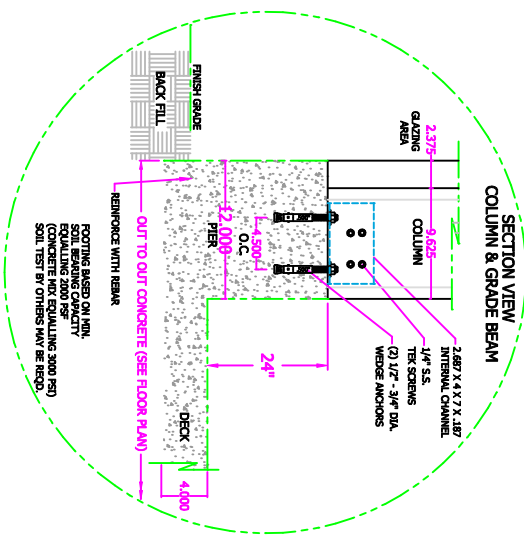
THRU SECTION

SEE DETAIL



ENGR. NODE LOCATIONS

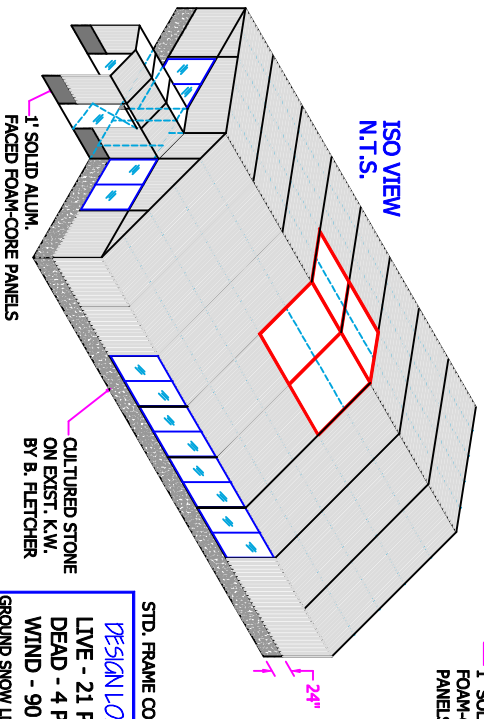
VERTICAL - 2,256 LBS.  
HORIZONTAL - 1,426 LBS.  
UPLIFT - 1,907 LBS.



SECTION VIEW COLUMN & GRADE BEAM

2.687 X 4.4 X 7 X .187 INTERNAL CHANNEL  
1/4" S.S. TR. SCREENS  
(2) 1/2" - 3/4" DIA. WEDGE ANCHORS  
O.C.  
4.300"  
24"  
4.400"  
DECK  
OUT TO OUT CONCRETE (SEE FLOOR PLAN)  
REINFORCE WITH REBAR  
FINISH GRADE  
BACK FILL  
GLAZING AREA  
2.375"  
9.052"

FOOTING BASED ON MIN. SOIL BEARING CAPACITY (CONCRETE MIX EQUIVALENT 3000 PSI SOIL TEST BY OTHERS MAY BE REQD.)



ISO VIEW N.T.S.

1" SOLID ALUM. FACED FOAM-CORE PANELS

CULTURED STONE ON EXIST. K.W. BY B. FLETCHER

STD. FRAME COLOR: WHITE DURACRON (BAKED ENAMEL)

DESIGN LOADS:

LIVE - 21 PSF

DEAD - 4 PSF

WIND - 90 MPH

GROUND SNOW LD. = 25 PSF



28 Blue Heron Dr.  
Mills River, NC, 28759  
PH: 828-368-5399  
FX: 828-368-1728

FOR INFORMATION OF THE ARCHITECT, ENGINEER, OR POOL ENCLOSURE MANUFACTURER: THIS DRAWING IS THE PROPERTY OF POOL ENCLOSURES, INC. (P.O. BOX 1448) AND IS NOT TO BE REPRODUCED, COPIED, OR TRANSMITTED IN ANY FORM OR BY ANY MEANS, WITHOUT THE WRITTEN PERMISSION OF POOL ENCLOSURES, INC. ANYONE KNOWINGLY OR UNKNOWINGLY VIOLATING THIS NOTICE SHALL BE HELD RESPONSIBLE FOR ANY AND ALL DAMAGES, INCLUDING REPUTATIONAL DAMAGE, THAT MAY BE INCURRED BY POOL ENCLOSURES, INC. AS A RESULT OF SUCH VIOLATION. THE ARCHITECT, ENGINEER, OR POOL ENCLOSURE MANUFACTURER SHALL BE RESPONSIBLE FOR OBTAINING ALL NECESSARY PERMITS AND APPROVALS FROM THE APPROPRIATE AGENCIES. POOL ENCLOSURES, INC. IS NOT RESPONSIBLE FOR ANY AND ALL DAMAGES, INCLUDING REPUTATIONAL DAMAGE, THAT MAY BE INCURRED BY THE ARCHITECT, ENGINEER, OR POOL ENCLOSURE MANUFACTURER AS A RESULT OF SUCH VIOLATION.

SCALE	JOB NAME	DESCRIPTION
3/32" = 1"	POOL ENCLOSURE	POOL ENCLOSURE
DATE	EXAMPLE	
SHEET 1	DRAWING NO.	30X48