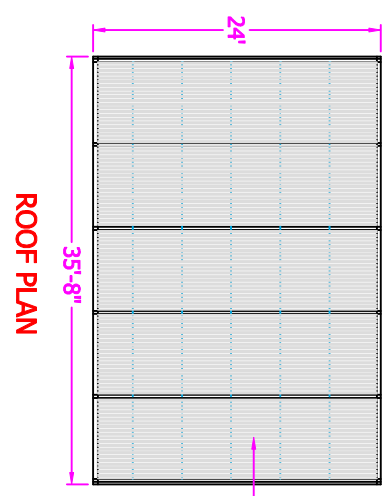
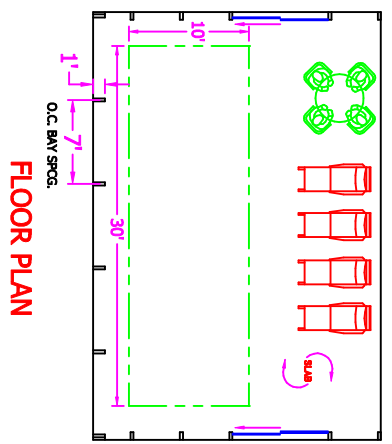


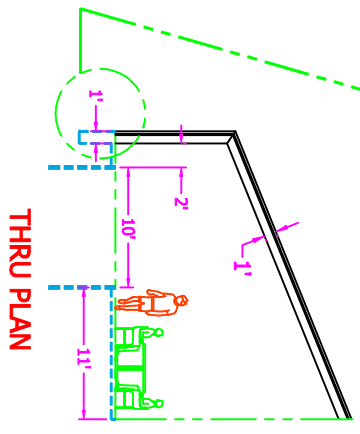
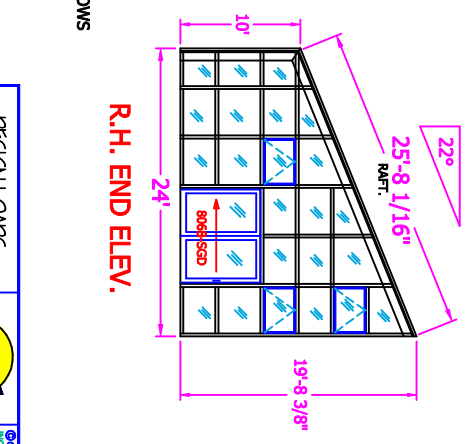
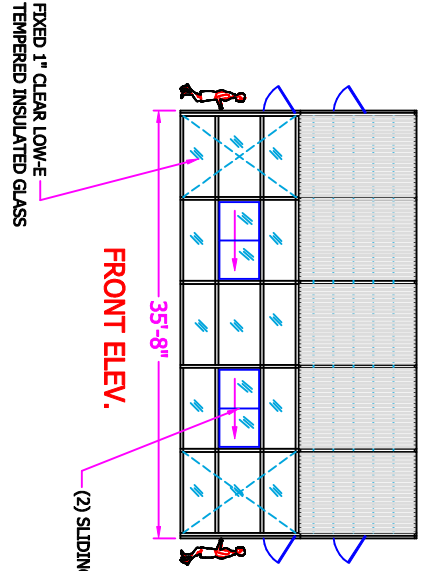
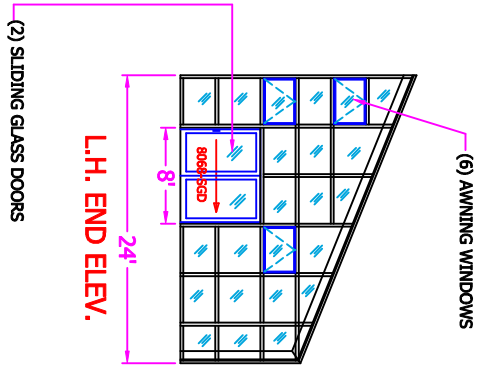
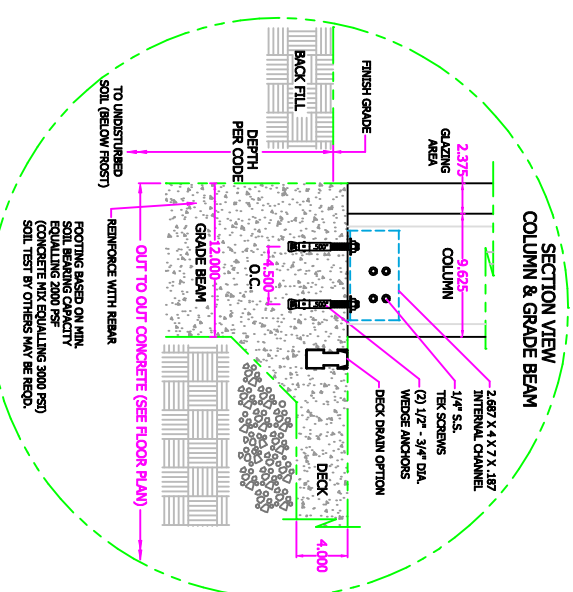
PROJECT NAME: NEW

SIGN IF APPROVED: _____

DATE APPROVED: _____

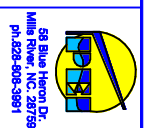


25MM (1") TEN-WALL I.R.E.X. POLYCARBONATE ROOF GLAZING
R. VALUE = 4.3



STD. FRAME COLOR: WHITE OR DARK BRONZE DURACRON (BAKED ENAMEL)

DESIGN LOADS:
LIVE - 30 PSF
DEAD - 5 PSF
WIND - 90 MPH
GROUND SNOW LD. =



©2019 POOL ENCLOSURE SYSTEMS, INC. ALL RIGHTS RESERVED. THIS DRAWING IS THE PROPERTY OF POOL ENCLOSURE SYSTEMS, INC. AND IS NOT TO BE REPRODUCED, COPIED, OR TRANSMITTED IN ANY FORM OR BY ANY MEANS, WITHOUT THE WRITTEN PERMISSION OF POOL ENCLOSURE SYSTEMS, INC.

DATE	SCALE	BY	DESCRIPTION
3/22/21	3/32" = 1'	KATER	LEARN-TO POOL ENCLOSURE
			EXAMPLE

SHEET 1 OF 1 DRAWING NO. **24X36LT**