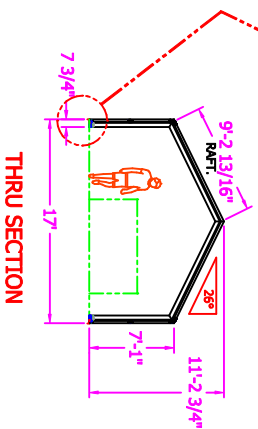
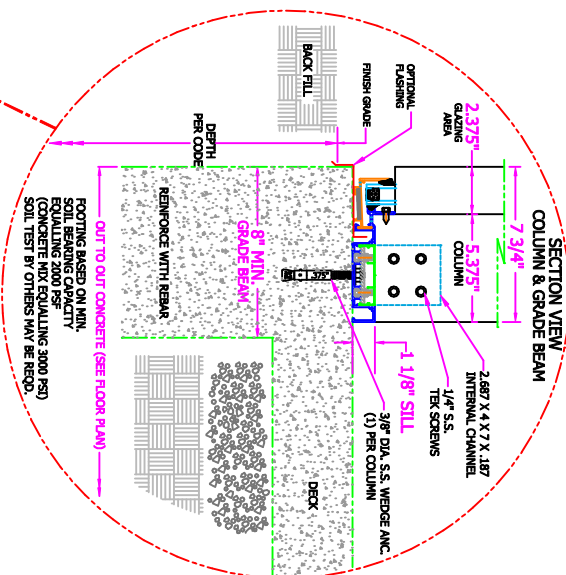
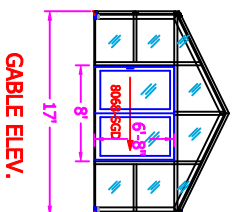
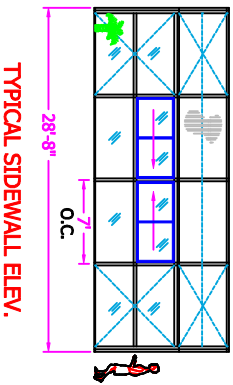
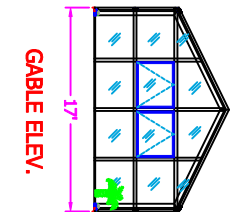
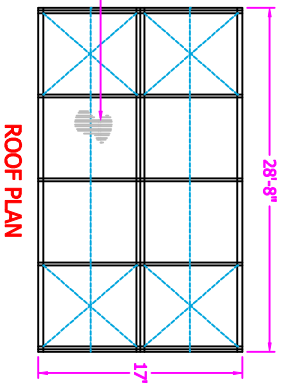
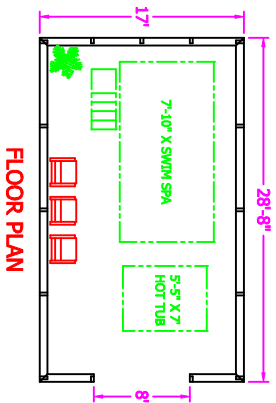


PROJECT NAME:

17' X 28'

SIGN IF APPROVED:

DATE APPROVED:



STD. FRAME COLOR: WHITE OR DARK BRONZE (BAKED ENAMEL / POWDER COAT)

DESIGN LOADS:			88 Blue Haven Design, Inc. Mills River, NC, 28779 ph. 828-508-3991	©CONCRETE FOOTING ENCLOSURE INC. THIS DRAWING IS THE PROPERTY OF FOOT ENCLOSURES, INC. (S.A. 476) ANY REUSE OR REPRODUCTION WITHOUT WRITTEN PERMISSION IS PROHIBITED. TRADE SECRET INFORMATION. ANYONE KNOWINGLY OR UNLAWFULLY DISSEMINATING OR OTHERWISE REPRODUCING THIS DRAWING WITHOUT WRITTEN PERMISSION FROM FOOT ENCLOSURES, INC. IS PROHIBITED.	DRAWN BY: BILL KATER	SCALE: 3/32" = 1'-0"	DATE: 1/8/2023	SHEET: 1	DRAWING NO: 17X28	DESCRIPTION: SWIM-SPA ENCLOSURE
LIVE - 30 PSF	DEAD - 5 PSF									