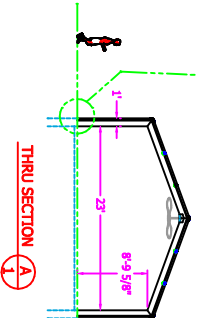
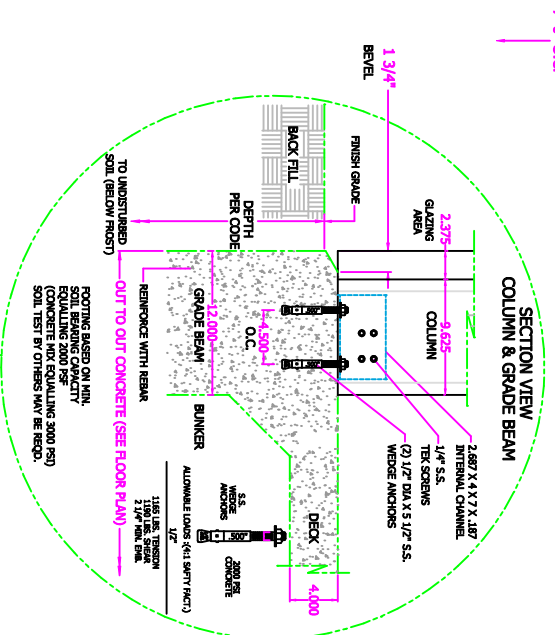
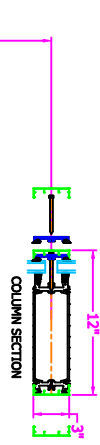
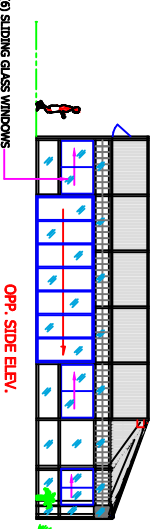
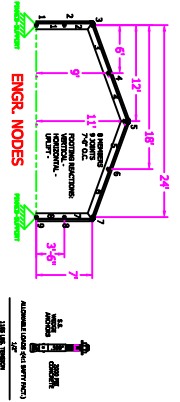
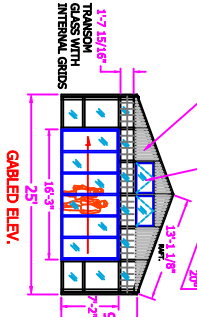
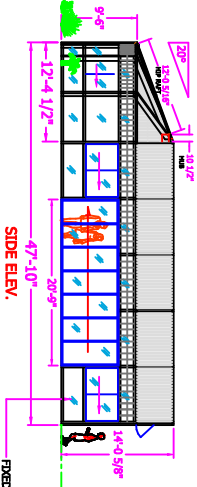
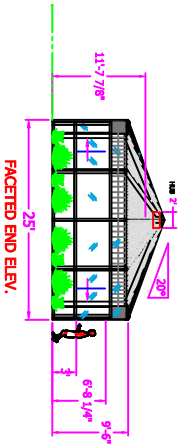
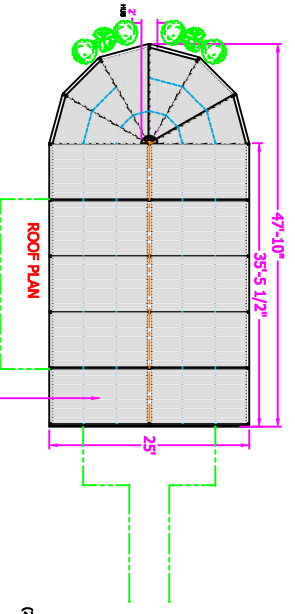
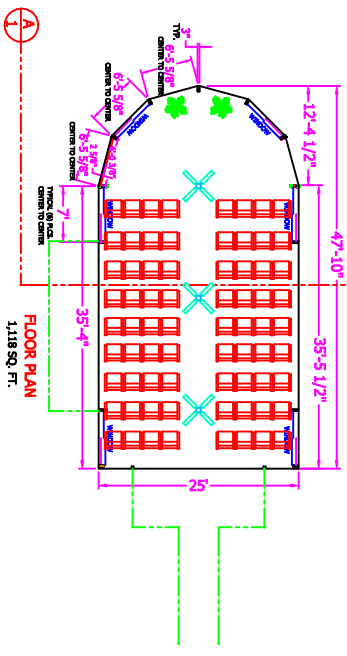
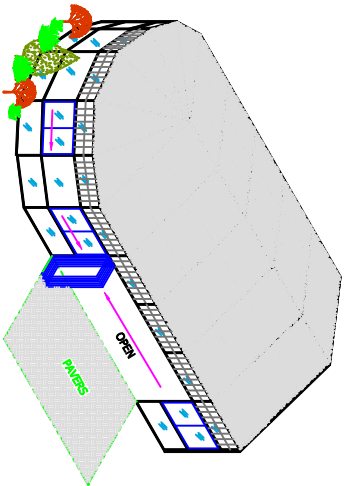


PROJECT NAME: NEW

SIGN IF APPROVED:

DATE APPROVED:



STD. FRAME COLOR: WHITE DURACRON BAKED ENAMEL

DESIGN LOADS:
LIVE - 20 PSF
DEAD - 5 PSF
WIND - 90 MPH
GROUND SNOW LOAD = 20 PSF



800 BLUE HORIZON DR.
MILLS, KS 67061-3991
PH: 828-891-3991
FAX: 828-891-7795

DATE	DESCRIPTION
1/16/21	PAVILION

SHEET 1 DRAWING NO. PAVILION-2