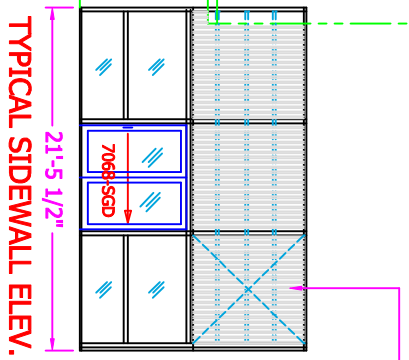
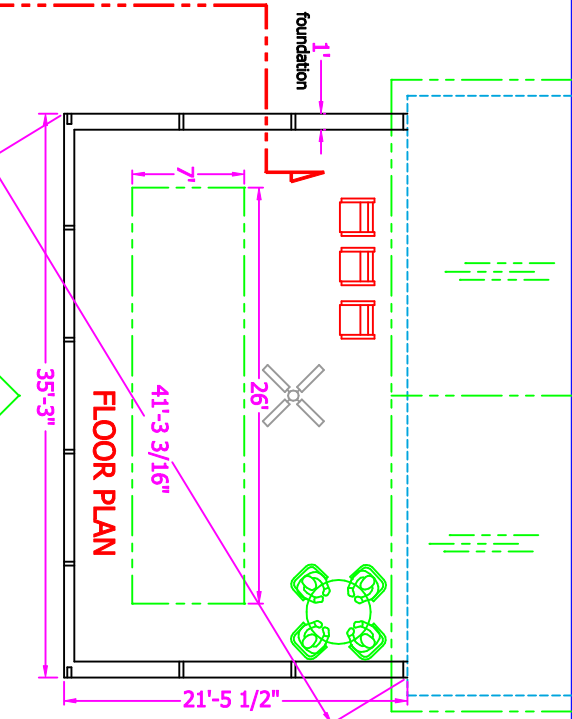
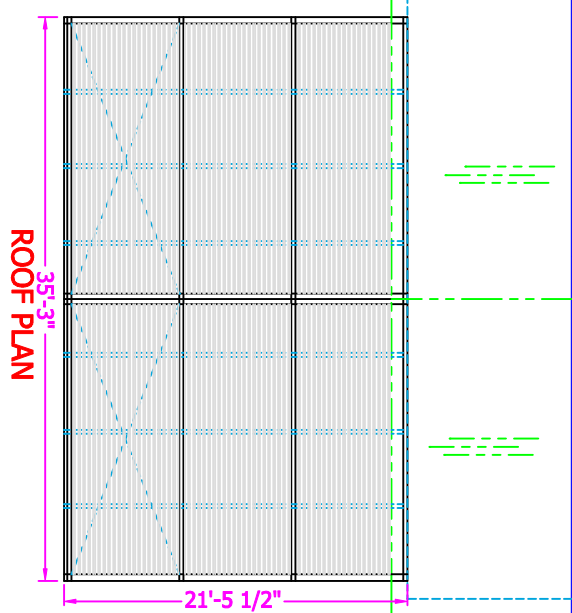
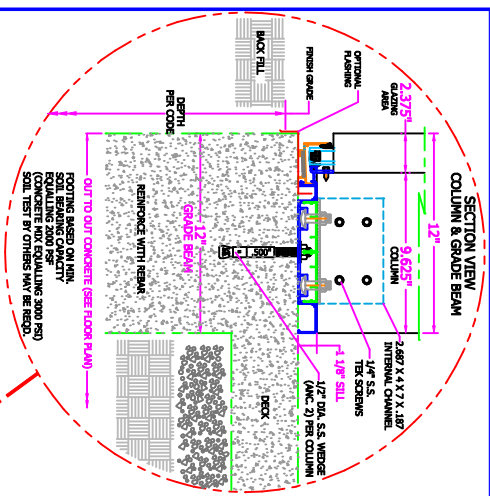


PROJECT NAME:

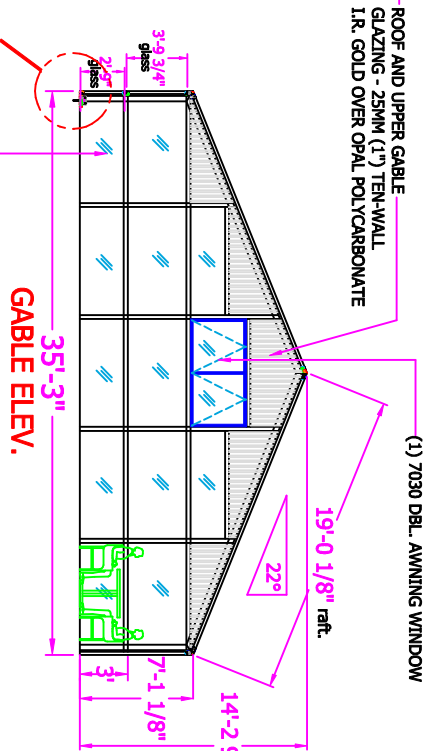
35X21

SIGN IF APPROVED:

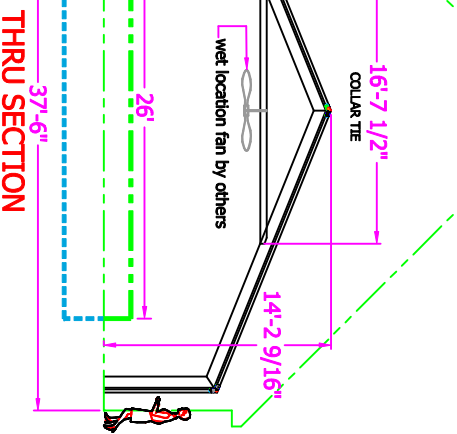
DATE APPROVED:



SEE DETAIL

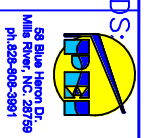


FIXED 1\"/>



STD. FRAME COLOR: WHITE OR DARK BRONZE (BAKED ENAMEL / POWDER COAT)

DESIGN LOADS
 LIVE - 20 PSF
 DEAD - 5 PSF
 WIND - 90 MPH
 GROUND SNOW LD. =



©Copyright 2022 Pool Enclosures, Inc. This drawing is the property of Pool Enclosures, Inc. (P.O. Box 1000, Mills River, NC 28759). All rights reserved. No part of this drawing may be reproduced, stored in a retrieval system, or transmitted in any form or by any means, electronic, mechanical, photocopying, recording, or by any information storage and retrieval system, without the prior written authorization of Pool Enclosures, Inc.

BRANN BY:	DESCRIPTION:
BILL KATERS	SWIM SPA ENCLOSURE
SCALE: 1/8"=1'-0"	JOB NAME:
DATE: 11/26/2021	EXAMPLE
SHEET 1	DRAWING NO. 35X21