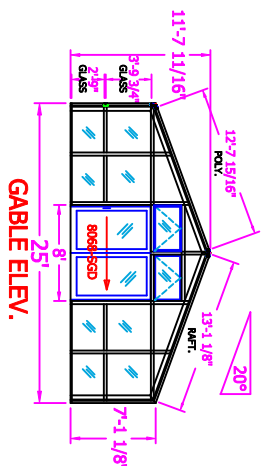
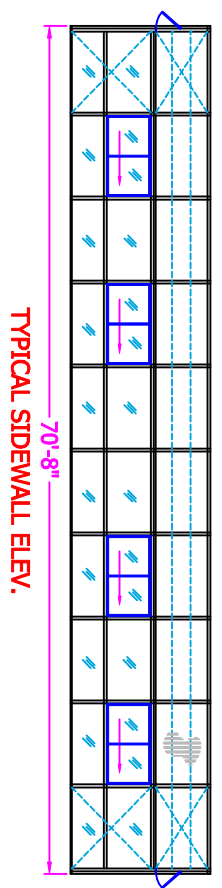
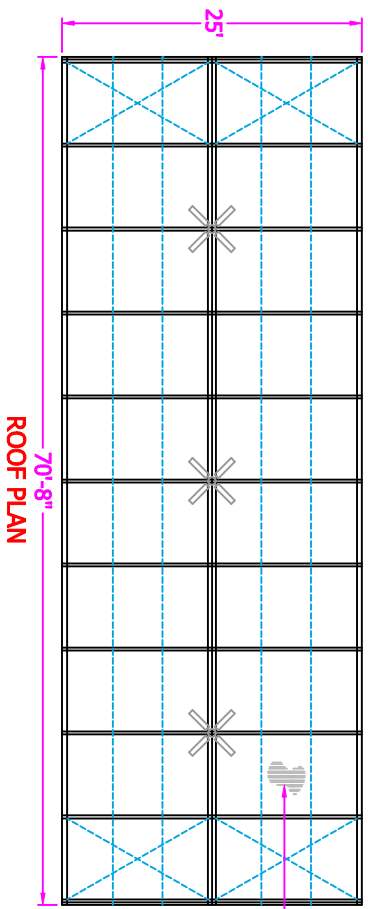
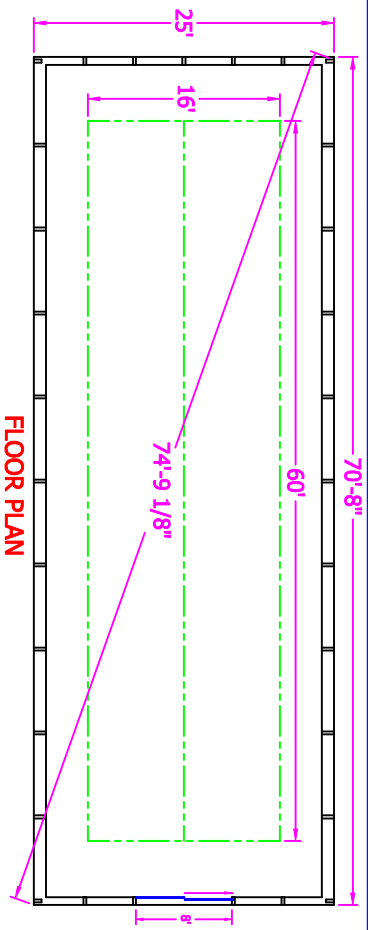
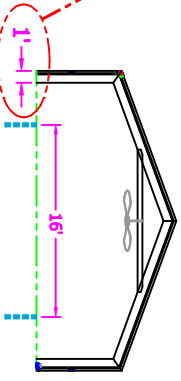
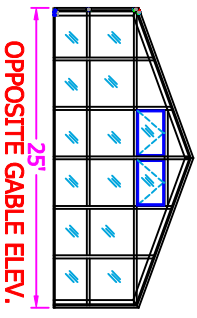
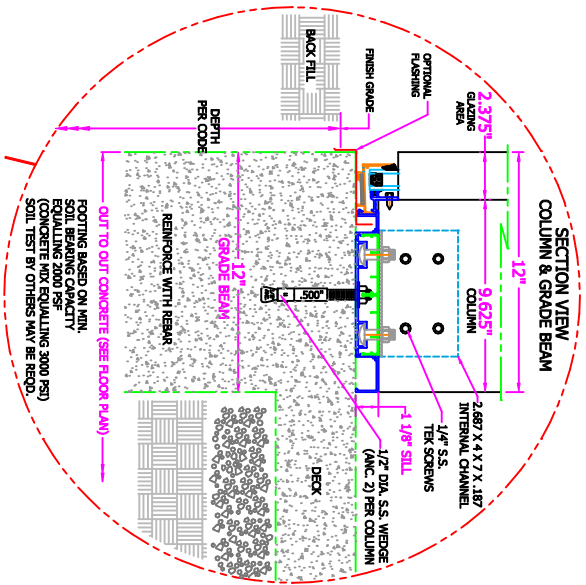


PROJECT NAME:

25 X 70

SIGN IF APPROVED:

DATE APPROVED:



25MM (1") IR. GOLD OVER
OPAL POLYCARBONATE ROOF
R. VALUE = 4.3

STD. FRAME COLOR: WHITE OR DARK BRONZE (BAKED ENAMEL / POWDER COAT)

DESIGN LOADS:		<p>Blue Haven Dr. Mills River, Inc. 28778 ph: 828-808-5891</p>	<p>©Copyright 2007 Pool Enclosures, Inc. This drawing is the property of Pool Enclosures, Inc. and is not to be reproduced, stored in a retrieval system, or transmitted in any form or by any means, electronic, mechanical, photocopying, recording, or by any information storage and retrieval system, without the prior written authorization of Pool Enclosures, Inc. TRADE SECRET INFORMATION. PROPERTY OF P.E.I. BY ACCEPTING THIS DRAWING THE RECIPIENT AGREES NOT TO REPRODUCE, COPY, OR TRANSMIT THIS DRAWING OR INFORMATION CONTAINED HEREIN WITHOUT THE WRITTEN AUTHORIZATION OF POOL ENCLOSURES, INC.</p>	
LIVE - 30 PSF	BRAND BY			DESCRIPTION
DEAD - 5 PSF	BILL KATER			POOL ENCLOSURE
WIND - 90 MPH	SCALE 3/32" = 1"			JOB NAME
GROUND SNOW LD. =	DATE 4/6/2022	EXAMPLE		
	SHEET 1	DRAWING NO. 25X70		