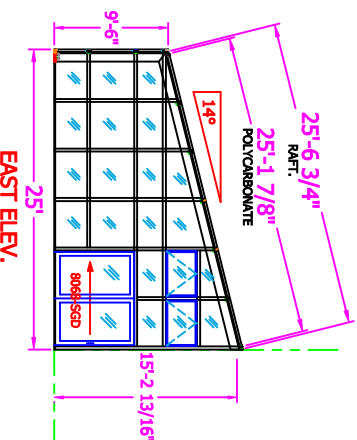
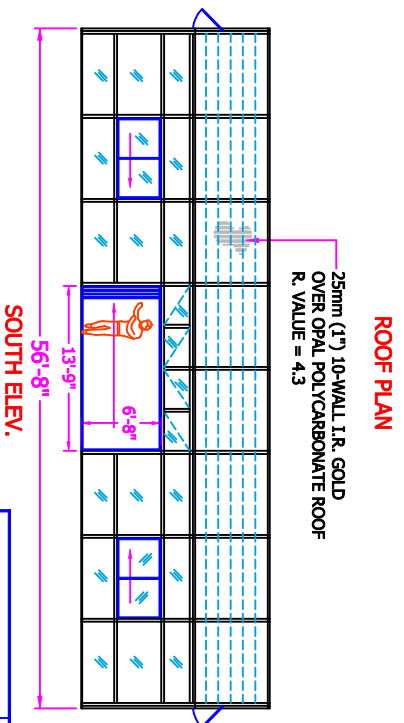
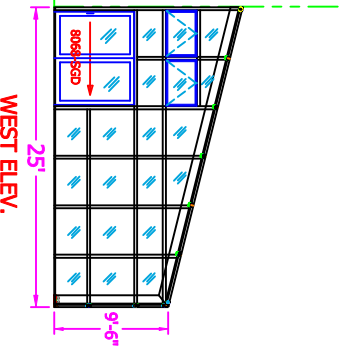
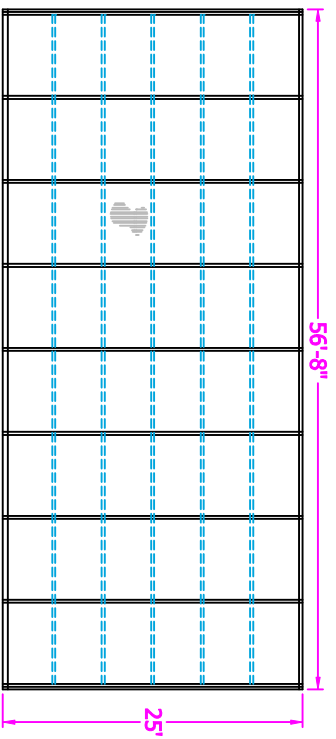
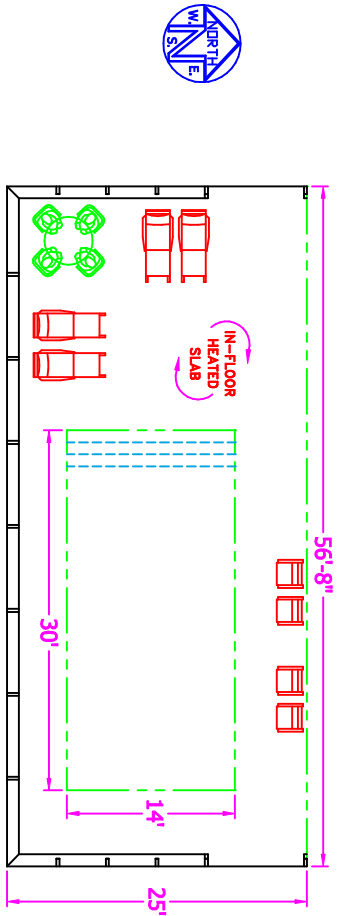


PROJECT NAME:

25X56-LT

SIGN IF APPROVED:

DATE APPROVED:



STD. FRAME COLOR: WHITE OR DARK BRONZE (PAKED ENAMEL / POWDER COAT)

DESIGN LOADS:

LIVE - 30 PSF
DEAD - 5 PSF
WIND - 90 MPH
GROUND SNOW LD.=



68 Blue Heron Dr.
Mills River, NC 28759
ph: 282-802-5991

©Copyright 2022 Blue Heron Engineering, Inc. This drawing is the property of Blue Heron Engineering, Inc. and is not to be reproduced, stored in a retrieval system, or transmitted in any form or by any means, electronic, mechanical, photocopying, recording, or by any information storage and retrieval system, without the prior written authorization of Blue Heron Engineering, Inc. All rights reserved. TRADE SECRET INFORMATION. PROPERTY OF BLUE HERON ENGINEERING, INC. DRAWING THE RECIPIENT'S ADDRESS NOT AVAILABLE. THE DRAWING, ON ANY MEDIUM, IS NOT TO BE REPRODUCED OR TRANSMITTED IN ANY FORM OR BY ANY MEANS, WITHOUT THE PRIOR WRITTEN AUTHORIZATION OF BLUE HERON ENGINEERING, INC.

BRANN BY:	DESCRIPTION:
BILL KATER	LEAN-TO POOL ENCLOSURE
SCALE 3/32" = 1"	JOB NAME
DATE 1/5/2022	EXAMPLE
SHEET 1	DRAWING NO. 25X56-LT