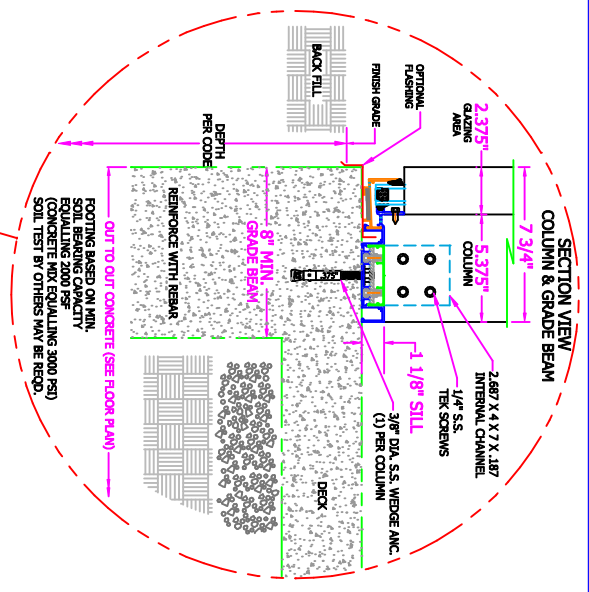
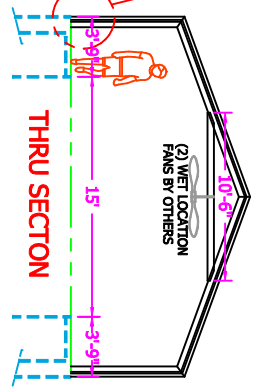
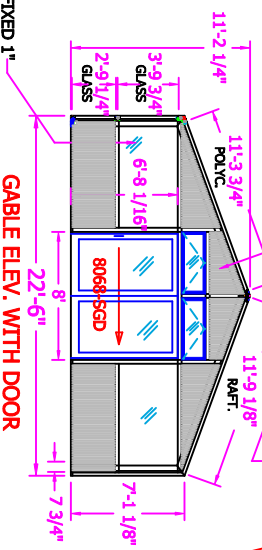
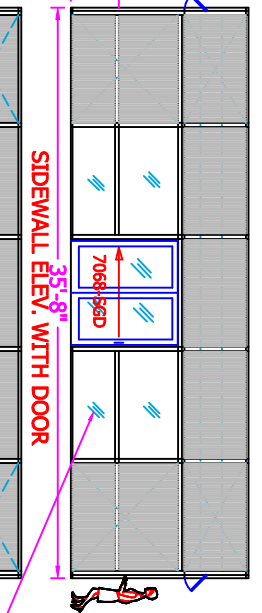
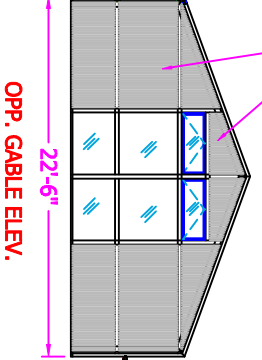
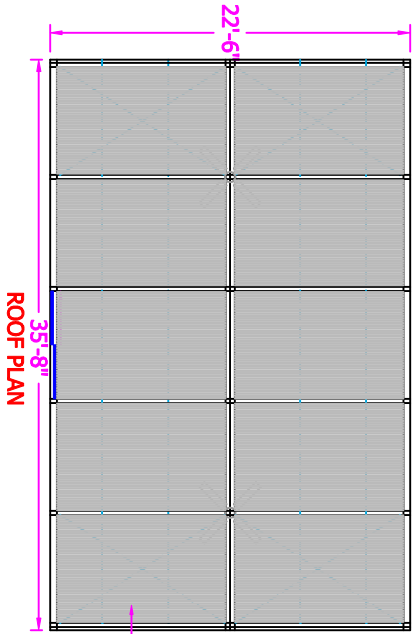
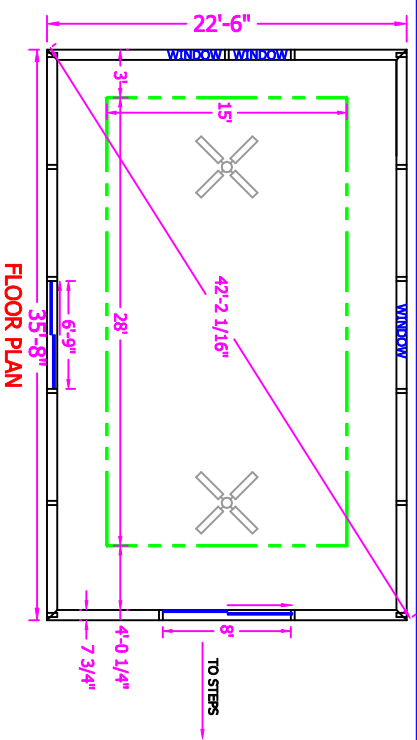


STD. FRAME COLOR WHITE OR: DARK BRONZE (BAKED ENAMEL / POWDER COAT)

PROJECT NAME: **22 X 35**

SIGN IF APPROVED: _____

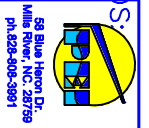
DATE APPROVED: _____



- WINDOWS / DOORS:**
- (1) 8' X 6'-8" SLIDING DOOR WITH SCREEN
 - (1) 7' X 6'-8" SLIDING DOOR WITH SCREEN
 - (1) 7' X 4' SLIDING WINDOW WITH SCREEN
 - (4) AWNING WINDOWS WITH SCREENS

DESIGN LOADS

LIVE - 20 PSF
DEAD - 5 PSF
WIND - 90 MPH
GROUND SNOW LD. =



©Copyright 2022 POOL ENCLOSURES INC. THIS DRAWING IS THE PROPERTY OF POOL ENCLOSURES INC. (DALLAS) TX. ANY REUSE OR REPRODUCTION WITHOUT WRITTEN PERMISSION IS STRICTLY PROHIBITED. THE RECIPIENT AGREES NOT TO MAKE ANY CHANGES TO THIS DRAWING OR TO REUSE OR REPRODUCE IT IN ANY MANNER WITHOUT WRITTEN AUTHORIZATION.

BRANN BY: KATERS	REVISION:	DESCRIPTION:
SCALE: 1/8"=1'-0"	JOB NAME: POOL ENCLOSURE	
DATE: 5/23/2022	EXAMPLE	
SHEET 1	DRAWING NO. 22X35	