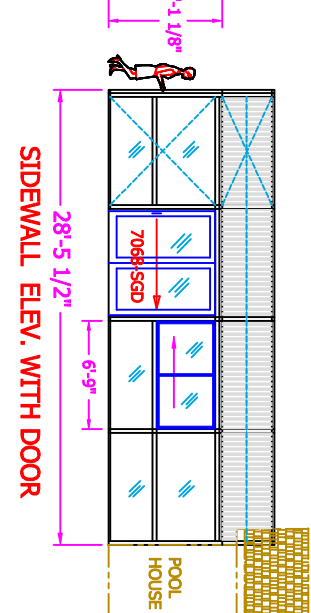
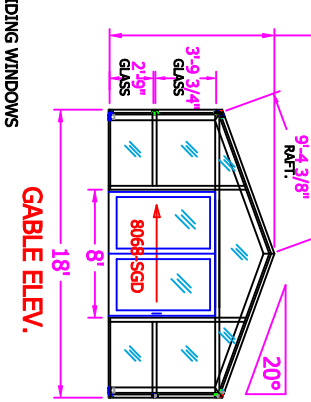
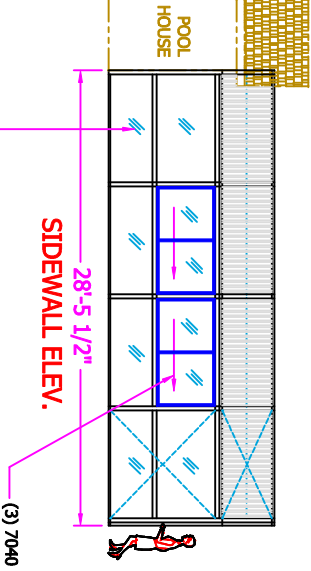
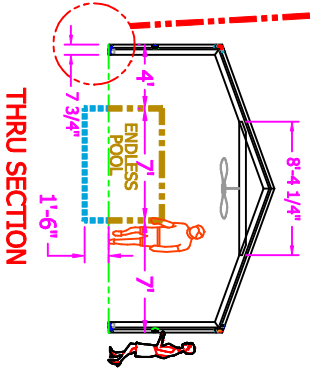
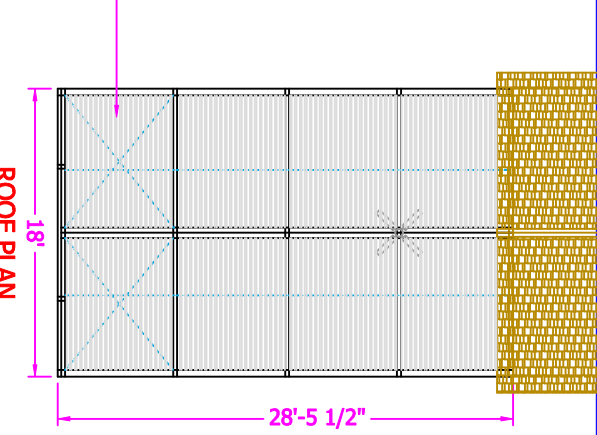
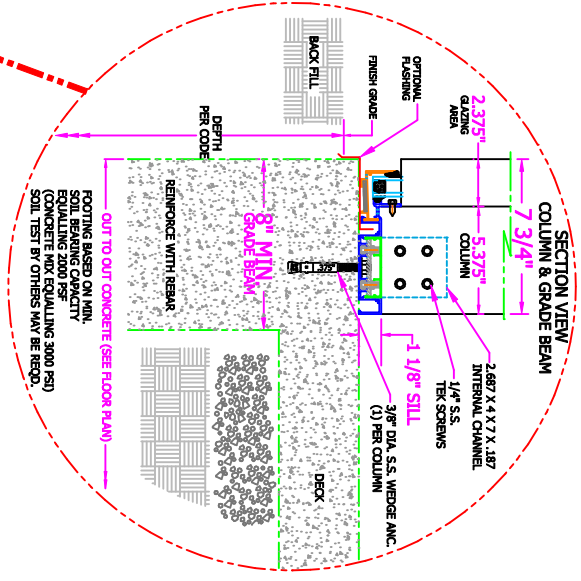


PROJECT NAME: **EXAMPLE**

SIGN IF APPROVED:

DATE APPROVED:



FIXED 1" CLEAR LOW-E TEMPERED INSULATED GLASS WALLS

(3) 7040 SLIDING WINDOWS WITH SCREENS

STD. FRAME COLOR: WHITE OR DARK BRONZE (BAKED ENAMEL / POWDER COAT)

**DESIGN LOADS**

LIVE - 30 PSF  
DEAD - 5 PSF  
WIND - 90 MPH  
GROUND SNOW LD. =



58 Blue Horizon Dr.  
Mills River, NC 28759  
ph. 828-805-3891

©Copyright 2022 POOL ENCLOSURES INC. THIS DRAWING IS THE PROPERTY OF POOL ENCLOSURES INC. (P.O. BOX 1000, KATERSVILLE, GA 30149). TRADE SECRET INFORMATION. PROPERTY OF P.E.I. BY ACCEPTING THIS DRAWING THE RECIPIENT AGREES NOT TO REPRODUCE, COPY, DISTRIBUTE, OR MAKE AVAILABLE TO ANY OTHER PARTY WITHOUT WRITTEN AUTHORIZATION.

BRANN BY:	DESCRIPTION:
BILL KATERS	ENDLESS POOL ENCLOSURE
SCALE: 1/8"=1'-0"	JOB NAME:
DATE: 5/19/2022	EXAMPLE
SHEET 1 OF 1	DRAWING NO. 18X28