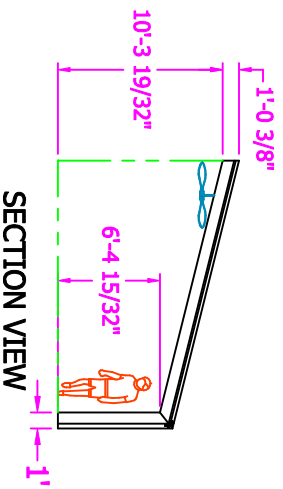
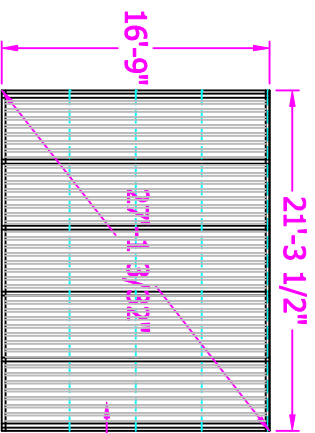


TOTAL GLAZED AREAS: 780 SQ.FT.
TOTAL FLOOR AREA : 360 SQ. FT.
TOTAL VOLUME : 2900 CU. FT.



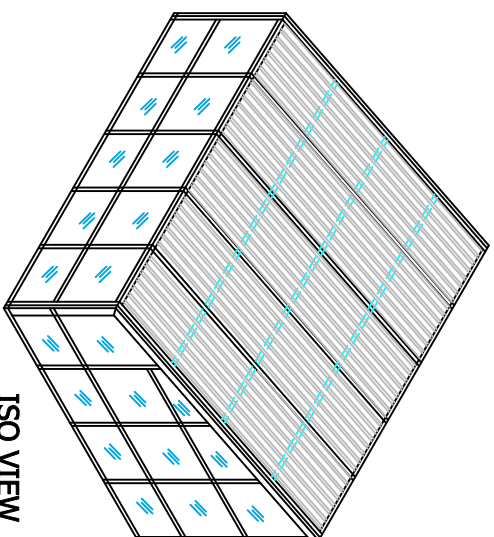
14.5 s.f.	10.5 s.f.	6.5 s.f.	19 s.f.
16 s.f.	16 s.f.	16 s.f.	10 s.f.
10 s.f.	10 s.f.	10 s.f.	10 s.f.

GABLE GLASS 138.5 S.F.

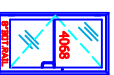


ROOF PLAN

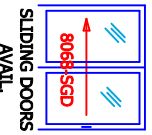
25MM OPAL 5-WALL
 POLYCARBONATE
 ROOF GLAZING
 366 S.F.



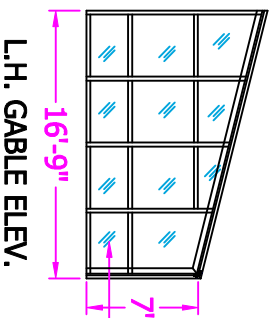
ISO VIEW



SWING DOOR
 AVAIL.

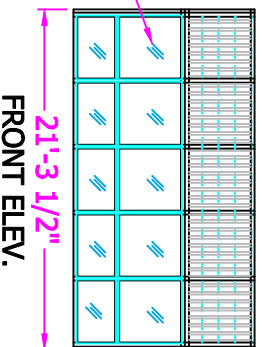


SLIDING DOORS
 AVAIL.



L.H. GABLE ELEV.

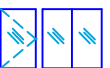
1" CLEAR INSULATED
 TEMPERED GLASS
 (CARDINAL LOW-E 272)



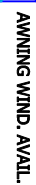
FRONT ELEV.

16 s.f.	16 s.f.	16 s.f.	16 s.f.	16 s.f.
10 s.f.	10 s.f.	10 s.f.	10 s.f.	10 s.f.

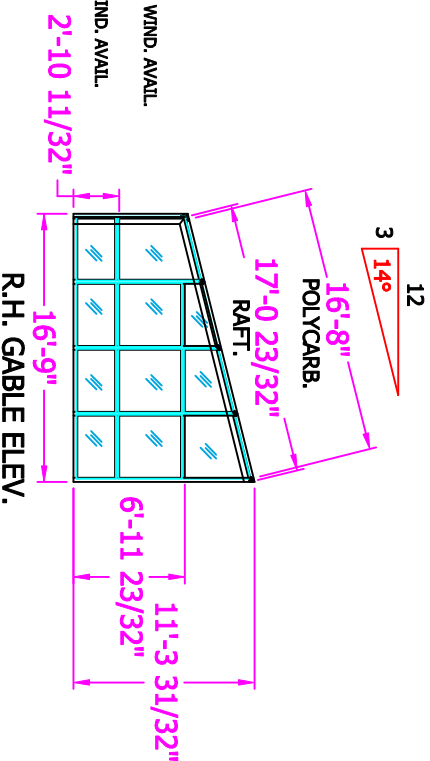
FRONTWALL GLASS 136 S.F.



DBL. HUNG WIND. AVAIL.



AWNING WIND. AVAIL.



R.H. GABLE ELEV.

STD. FRAME COLOR: WHITE DURACRON (BAKED ENAMEL)

LOADS: LIVE - 40 PSF DEAD - 5 PSF WIND - 90 MPH	 68 Blue Heron Dr. Mills River, NC, 28789 PH: 828-284-7206 FAX: 828-284-7208	<small>© COPYRIGHT 2005, POLY CARBONATE INC. THIS DRAWING IS THE PROPERTY OF POLY CARBONATE INC. (DALLAS) AND IS NOT TO BE REPRODUCED, COPIED, EITHER WHOLLY OR IN PART, OR TRANSMITTED IN ANY FORM OR BY ANY MEANS, WITHOUT PERMISSION FROM POLY CARBONATE INC. ANYONE KNOWINGLY VIOLATES THIS DRAWING THE RECIPIENT AGREES NOT TO PROVIDE OR OBTAIN ANY INFORMATION, TRADE SECRET INFORMATION, AND/OR KNOW-HOW WHICH IS THE PROPERTY OF POLY CARBONATE INC. FROM THIS DRAWING.</small>	DESIGNED BY BILL KATNER	SCALE 1/8"=1'-0"	DATE	JOB NAME 16'-9" X 21'-3 1/2" SPA ENCL.	DESCRIPTION EXAMPLE
			DRAWN BY				
			SHEET 1			DRAWING NO.	17SAACC20