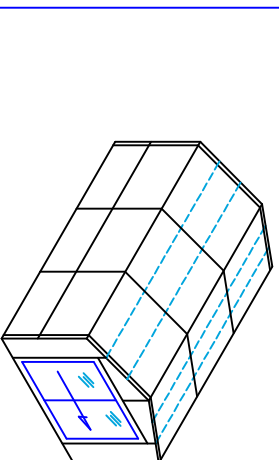
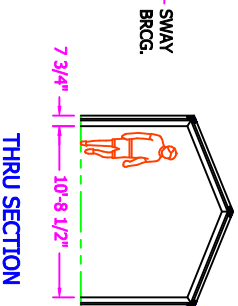
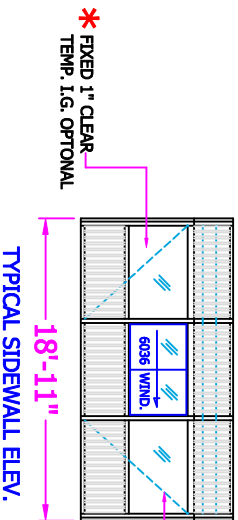
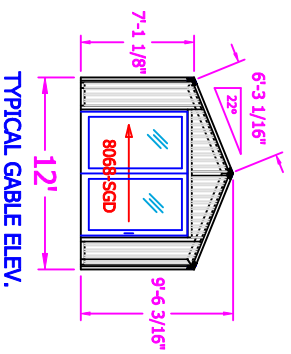
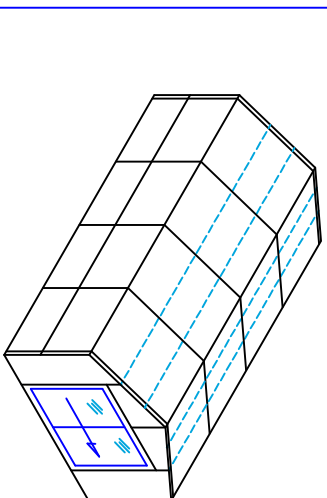
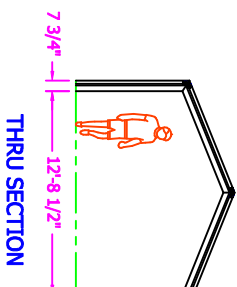
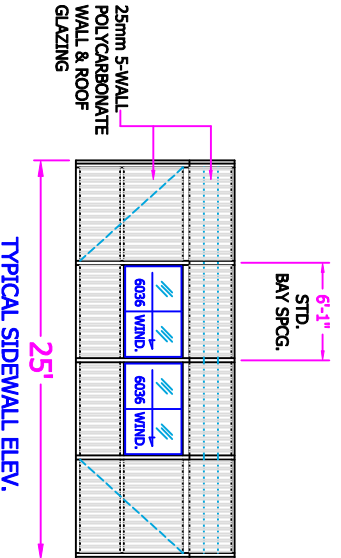
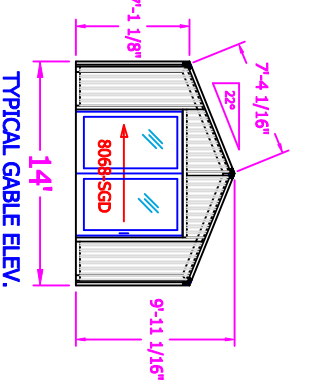


227 SQ. FT.



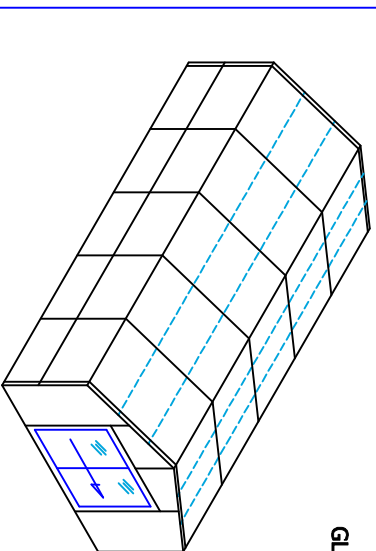
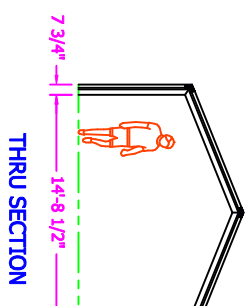
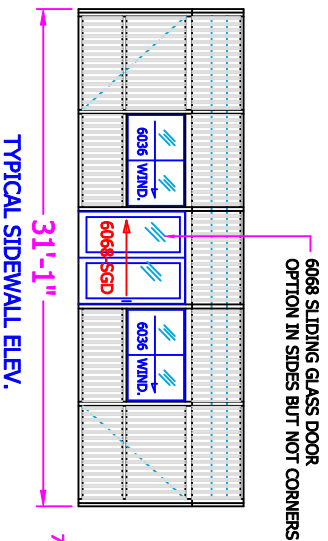
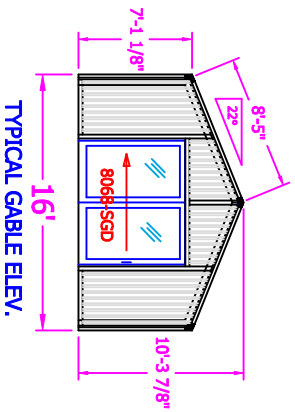
682 S.F.  
GLAZED AREA

350 SQ. FT.



936 S.F.  
GLAZED AREA

497 SQ. FT.



1200 S.F.  
GLAZED AREA

- PRE-GASKETED FRAMING
- BUILT-IN INTERNAL WEAPAGE SYSTEM / AND ELECT. WIRE CHASE
- THERMALLY BROKEN FRAME SYSTEM WITH GLAZING R-VALUE OF 3.5
- NO EXPOSED FASTENERS / STAINLESS STEEL FASTENERS
- STD. FRAME COLOR: WHITE OR BRONZE DURACON (BAKED ENAMEL)

GLAZING OPTIONS:  
 ROOF - 25MM (1") BRONZE OR OPAL 5-WALL  
 WALLS - 25MM CLEAR/BRONZE/OPAL 5-WALL  
 \* 1" CLEAR TEMPERED INSUL. GLASS  
 ACCESSORIES - SLIDING DOORS & WINDOWS

DESIGN LOADS:  
 LIVE - 40 PSF  
 DEAD - 5 PSF  
 WIND - 90 MPH



©2009 POLY SPAC INC. THIS DRAWING IS THE PROPERTY OF POLY SPAC INC. (D.A.A.B.E) AND IS NOT TO BE REPRODUCED OR TRANSMITTED IN ANY FORM OR BY ANY MEANS WITHOUT THE WRITTEN PERMISSION OF POLY SPAC INC.

DATE	SCALE	DRAWING NO.	DESCRIPTION
	1/8"=1'-0"	SPACENCL-GAB	GABLED SPA ENCLOSURES EXAMPLES
SHEET 1			