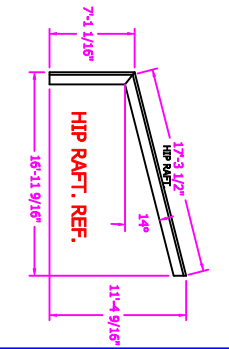
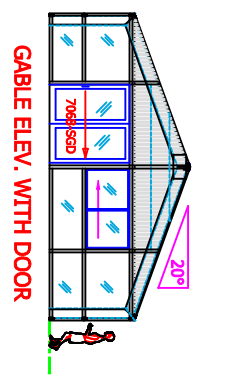
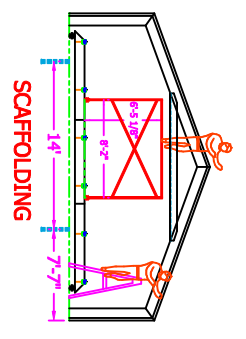
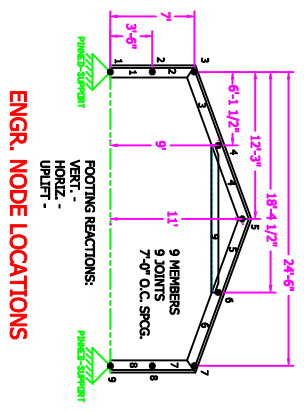
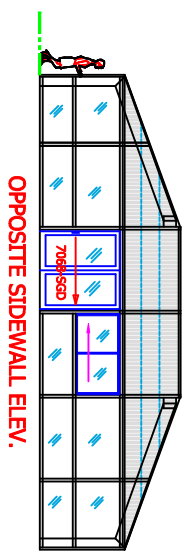
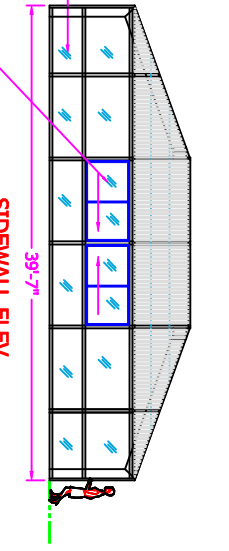
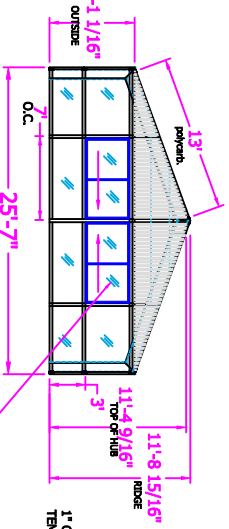
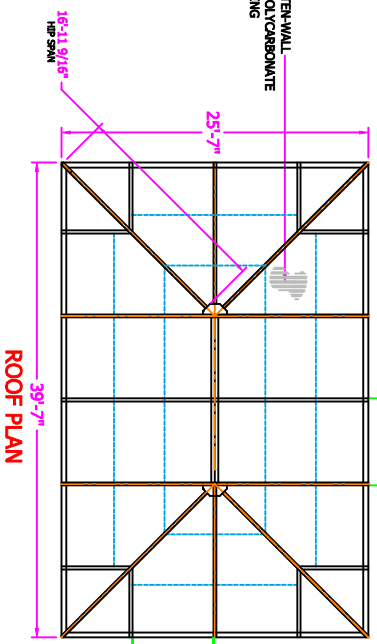
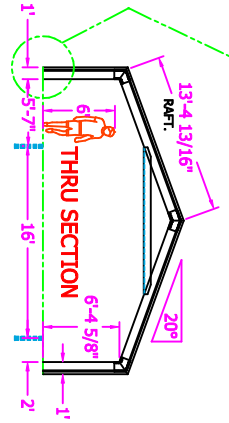
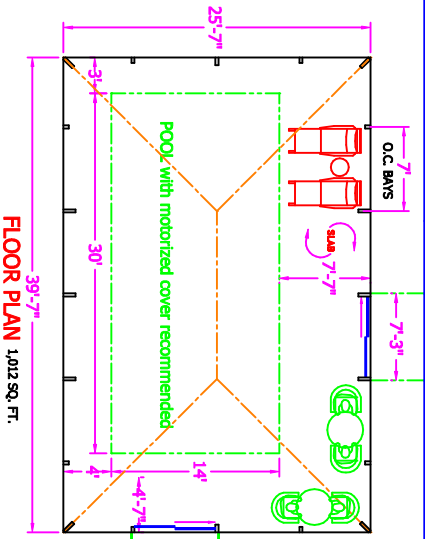
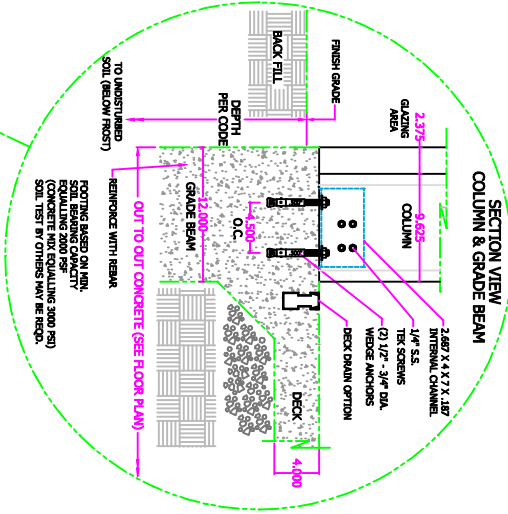


PROJECT NAME: NEW

SIGN IF APPROVED: _____

DATE APPROVED: _____



STD. FRAME COLOR: DARK BRONZE OR WHITE DURACRON (PAVED ENAMEL)

DESIGN LOADS:
 LIVE - 25 PSF
 DEAD - 5 PSF
 WIND - 115 MPH
 GROUND SNOW LD. = 30 PSF

68 Blue Heron Dr.
 Mills River, NC, 28759
 ph: 828-808-8991

©COPYRIGHT 2002 BOB ENCLOSURES OF POOL ENCLOSURES, INC. (D.A.S.E.) KATIE LANTON, TRADE SECRET INFORMATION. ANY REPRODUCTION OR TRANSMISSION OF THIS DRAWING OR INFORMATION CONTAINED HEREIN WITHOUT THE WRITTEN PERMISSION OF BOB ENCLOSURES OF POOL ENCLOSURES, INC. IS PROHIBITED. THE DRAWING, IN WHOLE OR IN PART, IS THE PROPERTY OF BOB ENCLOSURES OF POOL ENCLOSURES, INC. AND IS NOT TO BE REPRODUCED OR TRANSMITTED IN ANY FORM OR BY ANY MEANS, ELECTRONIC OR MECHANICAL, INCLUDING PHOTOCOPYING, RECORDING, OR BY ANY INFORMATION STORAGE AND RETRIEVAL SYSTEM, WITHOUT THE WRITTEN PERMISSION OF BOB ENCLOSURES OF POOL ENCLOSURES, INC.

BRANK, BV	DESCRIPTION
BILL KATER	HIPPED POOL ENCLOSURE
SCALE 3/32" = 1'	JOB NAME
DATE	EXAMPLE
SHEET 1	DRAWING NO. 26X40HIP